

HAPPY HOLIDAYS 2019



HAPPY HOLIDAYS from CU HAWAII FEDERAL CREDIT UNION!

Moola Moola, the Officials, Management and staff of CU Hawaii Federal Credit Union would like to take this time to wish you a very Happy Holiday Season and a prosperous New Year!

Moola Moola's Special Giving Message:

Moola Moola Savers, whatever you are doing, be kind and nice. "Even a child is known by what he or she does." Please have a wonderful Holiday Season!

HOLIDAY SCHEDULE 2019

Christmas Eve
Tuesday, December 24
Closed at 1pm

Christmas Day
Wednesday, December 25

New Year's Eve
Tuesday, December 31
Closed at 1pm

New Year's Day
Wednesday, January 1st
2020



Easy Holiday Treats



Melted Snowmen



INGREDIENTS

- Chocolate candy melts
- 1/2 cup butter at room temperature
- Reese's Peanut Butter Cups
- Red Hots or other red colored candy

INSTRUCTIONS

Melted snowman chocolate bark – a super easy holiday dessert, and a few other easy ingredients are all you need! A great option for Christmas cookie swap parties or a perfect holiday gift!

Pair these with our adorable Chocolate Covered Oreo Reindeer Cookies or our Rainbow Sprinkle Cookies and you will be all set for your holiday baking needs!

This Melted Snowman Chocolate Bark is incredibly easy to make and would be a great activity to do with kids of all ages. The bark is also a nice alternative for Christmas Cookie Swaps!

For an instruction video, please follow this web address: <http://princesspinkygirl.com/melted-snowman-chocolate-bark/>

Be sure to have an adult help you when searching online.

Holiday Color Mixer

HAPPY·HOLIDAYS



New Year's Challenge!

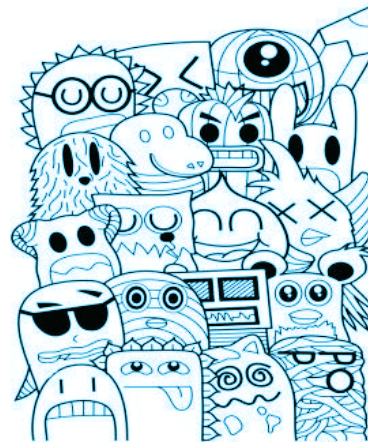


P P Y R T G F W C I R Z S I H
 F D L O H P S E T E V S K G A
 S H A K O X L T S S L P R U P
 I S H M R E E O B R D A O S P
 T H W W B F L C Q E M R W M Y
 O J H R N U I O S G W K E B N
 H H A O T T T U Q M Q L R U E
 M T C I P J W N R G X E I I W
 E I O M P X H T V Y R R F U Y
 H N D D S B O D G V L S J M E
 S P E N H G S O Y D Q Y K Y A
 C F B G I R A W A C G T I M R
 L W G U W G X N N C E R S N Y
 B Q I R A R H R F X S A S A Y
 B A L L K I G T G V M P T T K

SPARKLERS FIREWORKS MIDNIGHT COUNTDOWN
 CONFETTI PARTY RESOLUTIONS CELEBRATE
 HAPPY NEW YEAR KISS TOAST BALL

A	B	C	D	E	F	G	H	I	J	K	L	M	N	O	P	Q	R	S	T	U	V	W	X	Y	Z
1	18	11	8	17	5	15	19	20	9	6	3	16	4	13	24	7	25	23	22	14	2	21	10	26	12

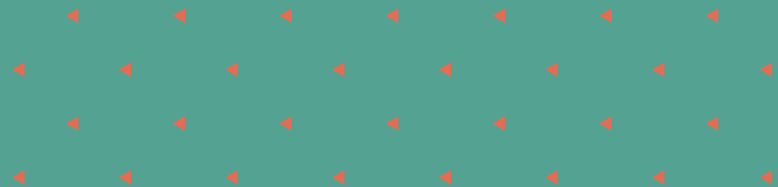
_____ !
 19 1 24 24 26 4 17 21 26 17 1 25 23



::Cryptogram Directions::

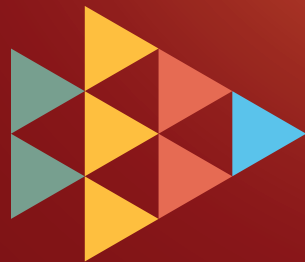
At the top there is a KEY that lists all the letters from A thru Z with a box below. Each of the letters has a corresponding number.

The bottom part contains a secret phrase. Each of the blanks has a number underneath it. Fill in the letters that correspond to the numbers below the blanks to solve the phrase.



Happy Holidays!

*From the Officials, Management
and Staff of CU Hawaii Federal Credit Union*



CU HAWAII

Federal Credit Union